



NINGBO JINCHENG METAL PRODUCTS CO., LTD.



NSF OEM/ODM



宁波金诚金属制品有限公司
Ningbo Jincheng Metal Products Co., Ltd

Eko Lee
Email: nbjincheng@126.com
eko1987@126.com
Tel: +86-574-87472177
Phone: +86-13819857799
<http://www.nbjc-metal.com/>



Website



Wechat

PROFESSIONAL MANUFACTURING

Foodservice Equipment/Restaurant Supplies



01

Company Profile

1.1 Company introduction 01

2. 1 Advance facilities 02

2.2 NSF Certificate 04

2.3 Competitive price 05

2.4 Independent R&D team 05

2.5 Multiple marketing channels 05

2.6 High-quality service 05

3.1 Worktable 06

3.2 Equipment Stand 09

3.3 Wall mounted shelf 09

3.4 Pot Rack 11

3.5 Utility Cart 12

3.6 Sheet Pan Rack 15

3.7 Storage Shelves 16

3.8 Cabinet 17

3.9 Compartment sink 19

3.10 Utility Sink 20

3.11 Hand Sink 21

3.12 Dish Table 22

3.13 Mop Sink 23

3.14 Underbar 24

3.15 Tool Chest 29

3.16 Accessories 30

02

Competitive Advantage

03

Product Ranges



Company Profile

Ningbo Jincheng Metal Products Co., Ltd. is an extremely professional and mature manufacturer and supplier of commercial foodservice equipment and restaurant supplies. Core team members including sales team, technical R&D team, production team, inspection team, etc. have been working in this industry for many years. With the strong teams and rich experience, the company was founded in 2020, located in Ningbo China. Our company has more than 100 employees since 2022, Our current production capacity is around 360X40HQ per year and annual turnover is over 15 million dollars/year.

The company has adopted all the advanced facilities including fully automatic roll materials processing center, CNC Laser pipe cutting machine, CNC dual-platform laser cutting plate machine, CNC shearing machines, CNC bending machines, various grades and quantities of punch presses and bending machines, robot welding, automatic grinding and polishing machines, automatic balers, etc. Our teams will constantly introduce more advanced equipments according to the process of our products, so as to improve our production efficiency, product quality and reduce production cost.

Our main product line includes worktables, overshelves, equipment stands, wall shelves, pot racks, sheet pan racks, utility carts, storage shelves, dunnage racks, dish tables, underbar units, compartment sinks, hand sinks, drop in sinks, mop sinks, ice bins, cabinets, tool chest, grease filters, meat griders, planetary mixers, all kinds of stainless steel customized products, etc. At the same time, we will continue developing new products to meet the market demand.

We have strong competitive advantages, including professional manufacturer on foodservice equipments industry for many years, advanced production facilities, independent R&D team, NSF certificated, strict quality inspection, high quality customer service, integrated management system, etc., we have the ability to provide customers with high quality, cost-effective products; at the same time we have the ability to develop all kinds of customized products based on customer's drawings, physical samples, or pictures and sizes.

"JinCheng" means "Faith will move mountains". With our effort, I believe we will build a long term business relationship with you and become good friends.

Advance Facilities



Sheared Raw Materials



Tubing Laser Cutting



CNC Laser Cutting



Steel Plate Shearer



Punching



Cnc Bending Workshop



Welding



Automatic Welding&molding Machine



Semi-finished Products Warehouse



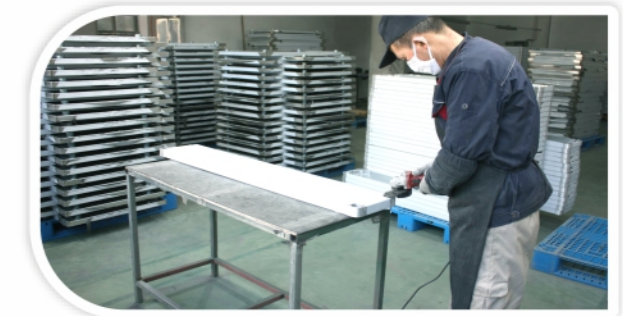
Sink Packaging Line



Pallet



Finished Goods Warehouse



Polishing



Strict Quality Inspection



Worktable Packaging Line



Container Loading

NSF certificated

NSF International

789 N. Dixboro Road, Ann Arbor, MI 48105 USA

RECOGNIZES

Ningbo Jincheng Metal Products Co., Ltd.
China

AS COMPLYING WITH NSF/ANSI 2 AND ALL APPLICABLE REQUIREMENTS.
PRODUCTS APPEARING IN THE NSF OFFICIAL LISTING ARE
AUTHORIZED TO BEAR THE NSF MARK.



ISO/IEC 17065
Product Certification Body
#0218
Certification Program
Accredited by the
American National
Standards Institute



SCC Accredited
Certification Program
Accredited by the
Standards Council
of Canada

This certificate is the property of NSF International and must be returned upon request. This certificate remains valid as long as this client has products in Listing for the referenced standards. For the most current and complete Listing information, please access NSF's website (www.nsf.org).

February 3, 2021
Certificate# C0585485 - 01

Amy Wirges
Senior Managing Director, Product Certification



Competitive price

- Optional multiple quality supplier chain with competitive price
- Product diversification caused high utilization rate of raw materials
- The factory adopts advanced production material control (PMC), the production efficiency is high
- Ningbo port is only half an hour away from the factory, container transport costs are low



Independent R&D team

- Independent R & D team, constantly develop new products to meet market demand
- Customize a variety of products based on your drawings, samples or photographs to meet customer needs



Multiple marketing channels

- Exhibition of professional industry (Domestic and international)
- Company website and Alibaba



High-quality service

- Professional sales team
- Reply within 24 hours
- Fast lead time
- Timely delivery guaranteed
- Quality assurance for one year
- Complete after-sales system

Worktable Specification (Inch)(mm)

Width	14", 18", 20", 24", 30", 36"	
Length	12", 15", 18", 24", 30", 36", 48", 60", 72", 84", 96"	
Height	34", 35"	
Top Shelf	Material	430S/S or 304S/S
	Thickness	18gauge or 16gauge
Adjustable Undershelf	Material	Galvanized, 430S/S or 304S/S
	Thickness	18gauge or 16gauge
Legs & Sockets	Material	Galvanized or Stainless steel
Adjustable Bullet Feet	Plastic, Stainless steel, Zinc alloy or Castors	
Packing	Knock down, 1pc/ctn	



Width	355mm, 457mm, 508mm, 610mm, 762mm, 914mm	
Length	305mm, 380mm, 457mm, 610mm, 762mm, 914mm, 1220mm, 1524mm, 1830mm, 2134mm, 2438mm	
Height	864mm or 890mm	
Top Shelf	Material	430S/S or 304S/S
	Thickness	1.2mm or 1.5mm
Adjustable Undershelf	Material	Galvanized, 430S/S or 304S/S
	Thickness	1.2mm or 1.5mm
Legs & Sockets	Material	Galvanized or Stainless steel
Adjustable Bullet Feet	Plastic, Stainless steel, Zinc alloy or Castors	
Packing	Knock down, 1pc/ctn	

RCB Worktable Specification (Inch)(mm)

Width	14", 18", 20", 24", 30", 36"	
Length	12", 15", 18", 24", 30", 36", 48", 60", 72", 84", 96"	
Height	34", 35"	
Top Shelf	Material	430S/S or 304S/S
	Thickness	18gauge or 16gauge
Round Connecting Bracing	Material	Galvanized or Stainless steel
Legs & Sockets	Material	Galvanized or Stainless steel
Adjustable Bullet Feet	Plastic, Stainless steel, Zinc alloy or Castors	
Packing	Knock down, 1pc/ctn	

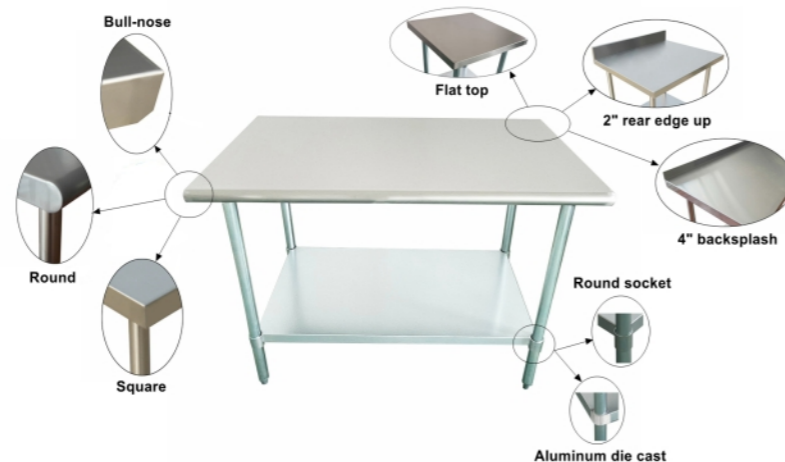


Width	355mm, 457mm, 508mm, 610mm, 762mm, 914mm	
Length	305mm, 380mm, 457mm, 610mm, 762mm, 914mm, 1220mm, 1524mm, 1830mm, 2134mm, 2438mm	
Height	864mm or 890mm	
Top Shelf	Material	430S/S or 304S/S
	Thickness	1.2mm or 1.5mm
Round Connecting Bracing	Material	Galvanized or Stainless steel
Legs & Sockets	Material	Galvanized or Stainless steel
Adjustable Bullet Feet	Plastic, Stainless steel, Zinc alloy or Castors	
Packing	Knock down, 1pc/ctn	

Optional Styles (Inch)(mm)

Top Shelf Style	Front edge	Bull-nose, Round or Square
	Back edge	Flat top, 2" rear upturn, 4" backsplash
Undershelf Style	Connection type	Round socket or Aluminum die cast

Top Shelf Style	Front edge	Bull-nose, Round or Square
	Back edge	Flat top, 50mm rear upturn or 100mm backsplash
Undershelf Style	Connection type	Round socket or Aluminum die cast



Wood Top Worktable Specification (Inch)(mm)

Width	18", 24", 30"	
Length	24", 30", 36", 48", 60", 72", 84", 96"	
Height	34", 35"	
Top Shelf	Material	Rubber Wood or Maple Wood
	Thickness	1.5"
Adjustable Undershelf	Material	Galvanized, 430S/S or 304S/S
	Thickness	18gauge or 16gauge
Legs & Sockets	Material	Galvanized or Stainless steel
Adjustable Bullet Feet	Plastic, Stainless steel, Zinc alloy or Castors	
Packing	Knock down, 1pc/ctn	



Width	457mm, 610mm, 762mm	
Length	610mm, 762mm, 914mm, 1220mm, 1524mm, 1830mm, 2134mm, 2438mm	
Height	864mm or 890mm	
Top Shelf	Material	Rubber Wood or Maple Wood
	Thickness	38mm
Adjustable Undershelf	Material	Galvanized, 430S/S or 304S/S
	Thickness	1.2mm or 1.5mm
Legs & Sockets	Material	Galvanized or Stainless steel
Adjustable Bullet Feet	Plastic, Stainless steel, Zinc alloy or Castors	
Packing	Knock down, 1pc/ctn	

Table shelf / Overshelf Specification (Inch)(mm)

Width	12", 14", 16", 18"	
Length	24", 30", 36", 48", 60", 72", 84", 96"	
Height	Single tier: 18" or Double tiers: 32"	
Shelf Quantity	Single tier or Double tiers	
Shelf & Mounting Bracket	Shelf edge style	Round or Square
	Material	430S/S or 304S/S
	Thickness	18gauge or 16gauge
Legs & Sockets	Material	Stainless Steel
Packing	Knock down, 1pc/ctn	



Width	305mm, 355mm, 406mm, 457mm	
Length	610mm, 762mm, 914mm, 1220mm, 1524mm, 1830mm, 2134mm, 2438mm	
Height	Single tier: 457mm or Double tiers: 813mm	
Shelf Quantity	Single tier or Double tiers	
Shelf & Mounting Bracket	Shelf edge style	Round or Square
	Material	430S/S or 304S/S
	Thickness	1.2mm or 1.5mm
Legs & Sockets	Material	Stainless Steel
Packing	Knock down, 1pc/ctn	

Drawer Specification (Inch)(mm)

Supporting Worktable	Mounts to work tables 24", 30" or 36" wide, and at least 30" long	
Drawer Liner	W X D X H	15"X20"X5" or 20"X20"X5"
	Material	22GA.304S/S
Drawer Frame	W X D X H	20"X24"X7" or 25"X24"X7"
	Material	430S/S or 304S/S
	Thickness	20gauge or 18gauge
Packing	Assembled, 1pc/ctn	



Supporting Worktable	Mounts to work tables 610mm, 762mm or 914mm wide, and at least 762mm long	
Drawer Liner	W X D X H	380X508X127mm or 508X508X127mm
	Material	0.8mm 304S/S
Drawer Frame	W X D X H	508X610X178mm or 635X610X178mm
	Material	430S/S or 304S/S
	Thickness	1.0mm or 1.2mm
Packing	Assembled, 1pc/ctn	

Table-Mounted Aluminum Bun Pan Rack Specification (Inch)(mm)

Supporting Worktable	Mounts to work tables 30" or 36" wide, and at least 30" long	
Overall Size (WXLXH)	21-1/4"X26"X25"H	
Holds	(6) 18"X26" sheet pans, 3" spacing	
Tube	Material	Aluminum or 201S/S
	Thickness	18gauge
Angle Slide	Material	Aluminum or 201S/S
	Thickness	18gauge or 16gauge
Packing	Knock down, 1pc/ctn	



Supporting Worktable	Mounts to work tables 762mm or 914mm wide, and at least 762mm long	
Overall Size (WXLXH)	540X660X635mmH	
Holds	(6) 457mmX660mm sheet pans, 76mm spacing	
Tube	Material	Aluminum or 201S/S
	Thickness	1.2mm
Angle Slide	Material	Aluminum or 201S/S
	Thickness	1.2mm or 1.5mm
Packing	Knock down, 1pc/ctn	

Folding Worktable Specification (Inch)(mm)

Width	24", 30"	
Length	48", 60", 72"	
Height	30-7/8"	
Top Shelf	Edge Style	Bull-nose, Round or Square
	Material	430S/S or 304S/S
	Thickness	20gauge, 18gauge or 16gauge
Removable Undershelf	Style	No undershelf or Solid shelf
	Material	Galvanized, 430S/S or 304S/S
	Thickness	20gauge, 18gauge or 16gauge
Legs	Material	S/S foldable legs
Packing	Knock down, 1pc/ctn	



Width	610mm, 762mm	
Length	1220mm, 1520mm, 1830mm	
Height	785mm	
Top Shelf	Edge Style	Bull-nose, Round or Square
	Material	430S/S or 304S/S
	Thickness	1.0mm, 1.2mm or 1.5mm
Removable Undershelf	Style	No undershelf or Solid shelf
	Material	Galvanized, 430S/S or 304S/S
	Thickness	1.0mm, 1.2mm or 1.5mm
Legs	Material	S/S foldable legs
Packing	Knock down, 1pc/ctn	

Castors Specification (Inch)(mm)

Type of Stem	Plastic Expanding	
Wheel Size	3", 4", 5"	
Brake Type	No brake, Side brake or Top brake	
Wheel Center	Material	Rubber or Polypropylene
	Material	PU
Packing	4 pcs/carton or 20 pcs/carton	



Type of Stem	Plastic Expanding	
Wheel Size	76mm, 100mm, 127mm	
Brake Type	No brake, Side brake or Top brake	
Wheel Center	Material	Rubber or Polypropylene
	Material	PU
Packing	4 pcs/carton or 20 pcs/carton	

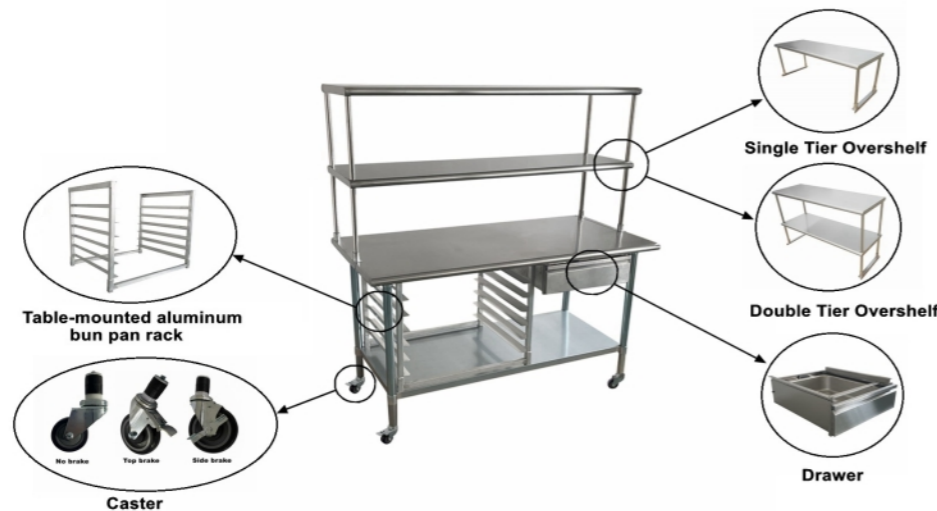
Equipment Stand Specification (Inch)(mm)

Width	24", 28", 30"	
Length	12", 15", 18", 24", 30", 36", 48", 60", 72", 84", 96"	
Height	24"	
Top Shelf	Material	430S/S or 304S/S
	Thickness	18gauge or 16gauge
Adjustable Undershelf	Connection Type	Round socket or Aluminum die cast
	Material	Galvanized, 430S/S or 304S/S
	Thickness	18gauge or 16gauge
Legs & Sockets	Material	Galvanized or Stainless steel
Bullet Feet	Material	Plastic, Stainless steel or Zinc alloy
Packing	Knock down, 1pc/ctn	



Width	610mm, 710mm, 762mm	
Length	305mm, 380mm, 457mm, 610mm, 762mm, 914mm, 1220mm, 1524mm, 1830mm, 2134mm, 2438mm	
Height	610mm	
Top Shelf	Material	430S/S or 304S/S
	Thickness	1.2mm or 1.5mm
Adjustable Undershelf	Connection Type	Round socket or Aluminum die cast
	Material	Galvanized, 430S/S or 304S/S
	Thickness	1.2mm or 1.5mm
Legs & Sockets	Material	Galvanized or Stainless steel
Bullet Feet	Material	Plastic, Stainless steel or Zinc alloy
Packing	Knock down, 1pc/ctn	

Supported products of worktable



Folding Shelf Specification (Inch)(mm)

Width	10", 12", 14"	
Length	24", 30", 36", 48", 60", 72", 84", 96"	
Shelf	Edge style	Square
	Material	430S/S or 304S/S
	Thickness	18gauge or 16gauge
Brackets	Stainless steel foldable bracket	
Packing	Knock down, 1pc/ctn	



Width	254mm, 305mm, 355mm	
Length	610mm, 762mm, 914mm, 1220mm, 1524mm, 1830mm, 2134mm, 2438mm	
Shelf	Edge style	Square
	Material	430S/S or 304S/S
	Thickness	1.2mm or 1.5mm
Brackets	Stainless steel foldable bracket	
Packing	Knock down, 1pc/ctn	

Wall Shelf Specification (Inch)(mm)

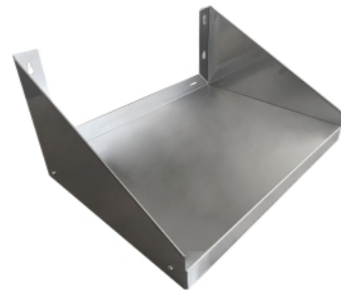
Width	6", 8", 10", 12", 14", 15", 16", 18", 24"	
Length	16", 24", 30", 36", 48", 60", 72", 84", 96"	
Shelf & Brackets	Front edge style	Round or Square
	Back edge style	1" or 1.5" up
	Material	430S/S or 304S/S
	Thickness	18gauge or 16gauge
Packing	Knock down, 1pc/ctn	



Width	254mm, 305mm, 355mm, 380mm, 406mm, 457mm, 610mm	
Length	610mm, 762mm, 914mm, 1220mm, 1524mm, 1830mm, 2134mm, 2438mm	
Shelf & Brackets	Front edge style	Round or Square
	Back edge style	25mm or 38mm up
	Material	430S/S or 304S/S
	Thickness	1.2mm or 1.5mm
Packing	Knock down, 1pc/ctn	

Microwave Shelf Specification (Inch)(mm)

Width	18", 24"	
Length	18", 24", 30", 36"	
Height	10"	
Shelf & Brackets	Material	430S/S or 304S/S
	Thickness	18gauge or 16gauge
Packing	Knock down or welded, 1pc/ctn	



Width	457mm, 610mm	
Length	457mm, 610mm, 762mm, 914mm	
Height	250mm	
Shelf & Brackets	Material	430S/S or 304S/S
	Thickness	1.2mm or 1.5mm
Packing	Knock down or welded, 1pc/ctn	

Tubular Wall Shelf Specification(Inch)(mm)

Width	12", 14", 16", 18"	
Length	24", 30", 36", 48", 60", 72", 84", 96"	
Tube	1" diameter S/S	
Brackets	Material	430S/S or 304S/S
	Thickness	18gauge or 16gauge
Packing	Knock down, 1pc/ctn	



Width	305mm, 355mm, 406mm, 457mm	
Length	610mm, 762mm, 914mm, 1220mm, 1524mm, 1830mm, 2134mm, 2438mm	
Tube	25mm diameter S/S	
Brackets	Material	430S/S or 304S/S
	Thickness	1.2mm or 1.5mm
Packing	Knock down, 1pc/ctn	

Pot Rack Shelf Specification (Inch)(mm)

Width	12", 14", 15"	
Length	24", 30", 36", 48", 60", 72", 84", 96"	
Shelf & Brackets	Material	304S/S or 430S/S
	Thickness	18gauge or 16gauge
Bar	Material	430S/S or 304S/S
	Thickness	6gauge
Hook	Material	S/S
Packing	Knock down, 1pc/ctn	



Tubular Glass Rack Shelf Specification (Inch)(mm)

Width	18"	
Length	22", 42", 62"	
Height	11"	
Tube	Material	1.5" diameter S/S
	Thickness	18gauge
Brackets	Material	430S/S or 304S/S
	Thickness	16gauge
Packing	Knock down, 1pc/ctn	



Width	457mm	
Length	560mm, 1067mm, 1575mm	
Height	280mm	
Tube	Material	38mm diameter S/S
	Thickness	1.2mm
Brackets	Material	430S/S or 304S/S
	Thickness	1.5mm
Packing	Knock down, 1pc/ctn	

Slanted Glass Rack Shelf Specification (Inch)(mm)

Width	22.5"	
Length	21", 42", 63"	
Height	12"	
Shelf & Brackets	Material	304S/S or 430S/S
	Thickness	18gauge or 16gauge
Packing	Knock down, 1pc/ctn	



Width	570mm	
Length	533mm, 1067mm, 1600mm	
Height	305mm	
Shelf & Brackets	Material	304S/S or 430S/S
	Thickness	1.2mm or 1.5mm
Packing	Knock down, 1pc/ctn	

Wall mounted shelf

Wall mounted shelf

Single Bar Pot Rack Specification (Inch)(mm)

Width	8.5"	
Length	24", 30", 36", 48", 60", 72", 84", 96"	
Height	2"	
Bar	Material	430S/S or 304S/S
	Thickness	6gauge
Hook	Material	S/S
Packing	1pcs/ctn	



Width	215mm	
Length	610mm, 762mm, 914mm, 1220mm, 1524mm, 1830mm, 2134mm, 2438mm	
Height	50mm	
Bar	Material	430S/S or 304S/S
	Thickness	5mm
Hook	Material	S/S
Packing	1pcs/ctn	

Double Bar Pot Rack Specification (Inch)(mm)

Width	12"	
Length	24", 30", 36", 48", 60", 72", 84", 96"	
Height	12"	
Bar	Material	430S/S or 304S/S
	Thickness	6gauge
Hook	Material	S/S
Packing	1pcs/ctn	



Width	305mm	
Length	610mm, 762mm, 914mm, 1220mm, 1524mm, 1830mm, 2134mm, 2438mm	
Height	300mm	
Bar	Material	430S/S or 304S/S
	Thickness	5mm
Hook	Material	S/S
Packing	1pcs/ctn	

Utility Cart Specification(Inch)(mm)

Small Size (WXLXH)	15"X28"X33"	Shelf size: 15"X24"
Medium Size (WXLXH)	18"X32"X33"	Shelf size: 18"X28"
Large Size (WXLXH)	21"X37"X33"	Shelf size: 21"X33"
Shelves	Quantity	2 layers or 3 layers
	Material	304S/S or 430S/S
	Thickness	18gauge or 16gauge
Legs	"L" shape	
Handle	Material	Stainless steel
	Size	4"
Castor	Brake	2 with no brake, 2 with top brakes
	Size	4"
Packing	Knock down, 1pc/tn	



Small Size (WXLXH)	380X710 X838mm	Shelf size: 380X 610mm
Medium Size (WXLXH)	450X810 X838mm	Shelf size: 450X 711mm
Large Size (WXLXH)	530X940 X838mm	Shelf size: 450X 838mm
Shelves	Quantity	2 layers or 3 layers
	Material	304S/S or 430S/S
	Thickness	1.2mm or 1.5mm
Legs	"L" shape	
Handle	Material	Stainless steel
	Size	100mm
Castor	Brake	2 with no brake, 2 with top brakes
	Size	100mm
Packing	Knock down, 1pc/tn	

Tubular Utility Cart Specification (Inch)(mm)

Small Size (WXLXH)	16-1/4"X29 -1/2"X33"	Shelf size: 15"X24"
Medium Size (WXLXH)	19-1/4"X33 -1/2"X33"	Shelf size: 18"X28"
Large Size (WXLXH)	22-1/4"X38 -1/2"X33"	Shelf size: 21"X33"
Shelves	Quantity	2 layers or 3 layers
	Material	304S/S or 430S/S
	Thickness	18gauge or 16gauge
Legs & Socket	S/S round tube	
Handle	Material	Stainless steel
	Size	4"
Castor	Brake	2 with no brake, 2 with top brakes
	Size	4"
Packing	Knock down, 1pc/tn	



Small Size (WXLXH)	412X750 X838mm	Shelf size: 380X 610mm
Medium Size (WXLXH)	489X850 X838mm	Shelf size: 450X 711mm
Large Size (WXLXH)	565X978 X838mm	Shelf size: 450X 838mm
Shelves	Quantity	2 layers or 3 layers
	Material	304S/S or 430S/S
	Thickness	1.2mm or 1.5mm
Legs & Socket	S/S round tube	
Handle	Material	Stainless steel
	Size	100mm
Castor	Brake	2 with no brake, 2 with top brakes
	Size	100mm
Packing	Knock down, 1pc/tn	

Dinning Cart Specification (Inch)(mm)

Small Size (WXLXH)	16"X30"X33"	
Medium Size (WXLXH)	18"X33"X35"	
Large Size (WXLXH)	20"X37"X37"	
Shelves	Quantity	2 layers or 3 layers
	Material	430S/S or 201S/S
	Thickness	24gauge or 22gauge
Tubing	Style	Round or Square
	Size	4"
Castor	Brake	2 with no brake, 2 with top brakes
	Size	4"
Packing	Knock down, 1pc/tn	



Small Size (WXLXH)	400X750X835mm	
Medium Size (WXLXH)	450X850X900mm	
Large Size (WXLXH)	500X950X950mm	
Shelves	Quantity	2 layers or 3 layers
	Material	430S/S or 201S/S
	Thickness	0.6 or 0.8mm
Tubing	Style	Round or Square
	Size	100mm
Castor	Brake	2 with no brake, 2 with top brakes
	Size	100mm
Packing	Knock down, 1pc/tn	

Collecting Cart Specification (Inch)(mm)

Small Size (WXLXH)	16"X30"X33"	
Medium Size (WXLXH)	18"X33"X35"	
Large Size (WXLXH)	20"X37"X37"	
Shelves	Quantity	2 layers
	Material	430S/S or 201S/S
	Thickness	24gauge or 26gauge
Tubing	Style	Square
	Size	4"
Castor	Brake	2 with no brake, 2 with top brakes
	Size	4"
Packing	Knock down, 1pc/tn	



Small Size (WXLXH)	400X750X835mm	
Medium Size (WXLXH)	450X850X900mm	
Large Size (WXLXH)	500X950X950mm	
Shelves	Quantity	2 layers
	Material	430S/S or 201S/S
	Thickness	0.5mm or 0.6mm
Tubing	Style	Square
	Size	100mm
Castor	Brake	2 with no brake, 2 with top brakes
	Size	100mm
Packing	Knock down, 1pc/tn	

Pot rack

Utility cart

Drinking Cart Specification (Inch)(mm)

Small Size (WXLXH)	16"X30"X33"	
Medium Size (WXLXH)	18"X33"X35"	
Large Size (WXLXH)	20"X37"X37"	
Shelves	Quantity	2 layers
	Material	430S/S or 201S/S
	Thickness	24gauge or 26gauge
Tubing	Style	Square
Castor	Size	4"
	Brake	2 with no brake, 2 with top brakes
Packing	Knock down, 1pc/tn	



Small Size (WXLXH)	400X750X835mm	
Medium Size (WXLXH)	450X850X900mm	
Large Size (WXLXH)	500X950X950mm	
Shelves	Quantity	2 layers
	Material	430S/S or 201S/S
	Thickness	0.5mm or 0.6mm
Tubing	Style	Square
Castor	Size	100mm
	Brake	2 with no brake, 2 with top brakes
Packing	Knock down, 1pc/tn	

Transport Cart Specification (Inch)(mm)

Size A (WXLXH)	21.5"X35"X34"	
Size B (WXLXH)	24"X39"X34"	
Shelf	Material	430S/S, 201S/S or 304S/S
	Thickness	20gauge, 18gauge, 16gauge
Tubing	Material	Stainless steel
Castor	Size	4"
	Brake	2 Fixed, 2 Swivel
Packing	Knock down, 1pc/tn	



Size A (WXLXH)	545X890X864mm	
Size B (WXLXH)	610X990X864mm	
Shelf	Material	430S/S, 201S/S or 304S/S
	Thickness	1.0mm, 1.2mm or 1.5mm
Tubing	Material	Stainless steel
Castor	Size	100mm
	Brake	2 Fixed, 2 Swivel
Packing	Knock down, 1pc/tn	

Oil Pan Cart Specification(Inch)(mm)

Size A (WXLXH)	21.5"X35"X34"	
Size B (WXLXH)	24"X39"X34"	
Pan Height	2"	
Shelf	Material	430S/S, 201S/S or 304S/S
	Thickness	20gauge, 18gauge, 16gauge
Tubing	Material	Stainless steel
Castor	Size	4"
	Brake	2 Fixed, 2 Swivel
Packing	Knock down, 1pc/tn	



Size A (WXLXH)	545X890X864mm	
Size B (WXLXH)	610X990X864mm	
Pan Height	50mm	
Shelf	Material	430S/S, 201S/S or 304S/S
	Thickness	1.0mm, 1.2mm or 1.5mm
Tubing	Material	Stainless steel
Castor	Size	100mm
	Brake	2 Fixed, 2 Swivel
Packing	Knock down, 1pc/tn	

Sheet Pan Rack Specification (Inch)(mm)

Width	20-1/4"	
Length	26"	
Height	10 tiers: 38", 20 tiers 69"	
Pan Capacity	10, 12, 16, 20 full size sheet pan	
Aluminum Style	Tubing Frame	16gauge
	Angle Slide	16gauge
	Tube Connection	Square or Round
201S/S Style	Tubing Frame	20gauge
	Angle Slide	20gauge or 18gauge
	Tube Connection	Square tube
Castors	5" castors, 2 without brake, 2 with side brakes	
Packing	Knock down, 1pc/ctn	
Optional Accessories	Solid sheet pan / Perforated sheet pan PVC rubber net cover	



Width	510mm	
Length	660mm	
Height	10 tiers: 965mm, 20 tiers: 1750mm	
Pan Capacity	10, 12, 16, 20 full size sheet pan	
Aluminum Style	Tubing Frame	1.5mm
	Angle Slide	1.5mm
	Tube Connection	Square or Round
201S/S Style	Tubing Frame	1.0mm
	Angle Slide	1.0mm or 1.2mm
	Tube Connection	Square tube
Castors	127mm castors, 2 without brake, 2 with side brakes	
Packing	Knock down, 1pc/ctn	
Optional Accessories	Solid sheet pan / Perforated sheet pan PVC rubber net cover	

Sheet Pan Rack With Top Specification (Inch)(mm)

Width	20-1/4"	
Length	26"	
Height	38"	
Pan Capacity	10 full size sheet pan	
Aluminum Style	Tubing Frame	16gauge
	Angle Slide	16gauge
	Tube Connection	Square
	Top Cover	16gauge
201S/S Style	Tubing Frame	20gauge
	Angle Slide	20gauge or 18gauge
	Tube Connection	Square tube
	Top Cover	22gauge or 20gauge
Castors	5" castors, 2 without brake, 2 with side brakes	
Optional Accessories	Solid sheet pan / Perforated sheet pan	
Packing	Knock down, 1pc/ctn	



Width	510mm	
Length	660mm	
Height	965mm	
Pan Capacity	10 full size sheet pan	
Aluminum Style	Tubing Frame	1.5mm
	Angle Slide	1.5mm
	Tube Connection	Square
	Top Cover	1.5mm
201S/S Style	Tubing Frame	1.0mm
	Angle Slide	1.0mm or 1.2mm
	Tube Connection	Square tube
	Top Cover	0.8mm or 1.0mm
Castors	127mm castors, 2 without brake, 2 with side brakes	
Optional Accessories	Solid sheet pan / Perforated sheet pan	
Packing	Knock down, 1pc/ctn	

Wall Mounted Sheet Pan Rack Specification (Inch)(mm)

Half Size (WXLXH)	Size	13"X21"X18"
	Pan Capacity	5 half-size sheet pans
Full Size (WXLXH)	Size	21"X28"X18"
	Pan Capacity	6 full-size sheet pans
Double Half Size (WXLXH)	Size	13"X40"X18"
	Pan Capacity	10 half-size sheet pans
Aluminum Style	Tubing Frame	16gauge
	Angle Slide	16gauge
	Tube Connection	Square or Round
201S/S Style	Tubing Frame	20gauge
	Angle Slide	20gauge or 18gauge
	Tube Connection	Square tube
Packing	Fully welded or Knock down, 1pc/ctn	
Optional Accessories	Solid sheet pan / Perforated sheet pan	



Half Size (WXLXH)	Size	330X533X457mm
	Pan Capacity	5 half-size sheet pans
Full Size (WXLXH)	Size	533X710X457mm
	Pan Capacity	6 full-size sheet pans
Double Half Size (WXLXH)	Size	330X1016X457mm
	Pan Capacity	10 half-size sheet pans
Aluminum Style	Tubing Frame	1.5mm
	Angle Slide	1.5mm
	Tube Connection	Square or Round
201S/S Style	Tubing Frame	1.0mm
	Angle Slide	1.0mm or 1.2mm
	Tube Connection	Square tube
Packing	Fully welded or Knock down, 1pc/ctn	
Optional Accessories	Solid sheet pan / Perforated sheet pan	

Utility cart

Sheet Pan Rack

Dry Storage Shelf Specification (Inch)(mm)

Width	24"	
Length	31", 43", 55", 67"	
Height	2 tiers:38", 3 tiers:60", 4 Tiers:72"	
Shelves	Style	Solid shelf
	Material	Galvanized, 430S/S
	Thickness	18gauge or 16gauge
Legs & Sockets	Material	Galvanized or Stainless steel
Bullet feet	Material	Plastic, Stainless steel or Zinc alloy
Packing	Knock down, 1pc/ctn	



Width	610mm	
Length	785mm, 1090mm, 1400mm, 1700mm	
Height	2 tiers:965mm, 3 tiers:1525mm, 4 Tiers:1830mm	
Shelves	Style	Solid shelf
	Material	Galvanized, 430S/S
	Thickness	1.2mm or 1.5mm
Legs & Sockets	Material	Galvanized or Stainless steel
Bullet feet	Material	Plastic, Stainless steel or Zinc alloy
Packing	Knock down, 1pc/ctn	

Cross-bar Storage Shelf Specification (Inch)(mm)

Width	24"	
Length	31", 43", 55", 67"	
Height	2 tiers:38", 3 tiers:60", 4 Tiers:72"	
Shelves	Style	Cross-bar tubing shelf
	Material	201S/S
	Thickness	20gauge or 18gauge
Legs & Sockets	Material	Stainless steel
Bullet feet	Material	Stainless steel or Zinc alloy
Packing	Knock down, 1pc/ctn	



Width	610mm	
Length	785mm, 1090mm, 1400mm, 1700mm	
Height	2 tiers:965mm, 3 tiers:1525mm, 4 Tiers:1830mm	
Shelves	Style	Cross-bar tubing shelf
	Material	201S/S
	Thickness	1.0mm or 1.2mm
Legs & Sockets	Material	Stainless steel
Bullet feet	Material	Stainless steel or Zinc alloy
Packing	Knock down, 1pc/ctn	

Storage Wire Shelf Specification(Inch)(mm)

Shelves	Width	14" 18" 21" 24"
	Length	24", 30", 36", 42", 48", 54", 60", 72"
Legs	Material	Anti-bacterial Epoxy, Zinc W/ Epoxy or Chrome
	Height	13", 33", 54", 59", 63", 72", 74", 86"
Bullet feet	Material	Anti-bacterial Epoxy, Zinc W/ Epoxy or Chrome
	Material	Plastic or Zinc alloy, 1" adjustable
Packing	Knock down, 4 shelves/ctn, 4 legs with feet/ctn	



Shelves	Width	355mm, 457mm, 533mm, 610mm
	Length	610mm, 762mm, 914mm, 1067mm, 1220mm, 1370mm, 1524mm, 1830mm
Legs	Material	Anti-bacterial Epoxy, Zinc W/ Epoxy or Chrome
	Height	330mm, 838mm, 1370mm, 1500mm, 1600mm, 1830mm, 1880mm, 2185mm
Bullet feet	Material	Anti-bacterial Epoxy, Zinc W/ Epoxy or Chrome
	Material	Plastic or Zinc alloy, 25mm adjustable
Packing	Knock down, 4 shelves/ctn, 4 legs with feet/ctn	

Dunnage Rack Specification (Inch)(mm)

Width	18", 20", 24"	
Length	24", 30", 36", 48", 60", 72"	
Height	8", 12"	
Tubing	Material	Aluminum or 201S/S
	Thickness	18gauge or 16gauge
Packing	Welded: 6pcs/carton Knock down: 1pcs/carton	



Width	457mm, 508mm, 610mm	
Length	610mm, 762mm, 914mm, 1220mm, 1524mm, 1830mm	
Height	203mm, 305mm	
Tubing	Material	Aluminum or 201S/S
	Thickness	1.2mm or 1.5mm
Packing	Welded: 6pcs/carton Knock down: 1pcs/carton	

Slope Top Wall Cabinet Specification (Inch)(mm)

Width	15"	
Length	24", 30", 36", 42", 48", 60", 72", 84", 96"	
Height	32"	
Top Style	Slope top	
Door Style	Sliding door or Hinged door	
Handle	Plastic or S/S	
Lock	Optional	
Middle Shelf	Fixed or Adjustable	
Wall Mount Bracket	Included	
Whole Body	Material	430S/S or 304S/S
	Thickness	20gauge or 18gauge
Packing	Fabricated, 1pc/ctn	



Width	380mm	
Length	2610mm, 762mm, 914mm, 1067mm, 1220mm, 1524mm, 1830mm, 2134mm, 2438mm	
Height	813mm	
Top Style	Slope top	
Door Style	Sliding door or Hinged door	
Handle	Plastic or S/S	
Lock	Optional	
Middle Shelf	Fixed or Adjustable	
Wall Mount Bracket	Included	
Whole Body	Material	430S/S or 304S/S
	Thickness	1.0mm or 1.2mm
Packing	Fabricated, 1pc/ctn	

Flat Top Wall Cabinet Specification (Inch)(mm)

Width	15"	
Length	24", 30", 36", 42", 48", 60", 72", 84", 96"	
Height	32"	
Top Style	Flat top	
Door Style	Sliding door or Hinged door	
Handle	Plastic or S/S	
Lock	Optional	
Middle Shelf	Fixed or Adjustable	
Whole Body	Material	430S/S or 304S/S
	Thickness	20gauge or 18gauge
Packing	Fabricated, 1pc/ctn	



Width	380mm	
Length	610mm, 762mm, 914mm, 1067mm, 1220mm, 1524mm, 1830mm, 2134mm, 2438mm	
Height	813mm	
Top Style	Flat top	
Door Style	Sliding door or Hinged door	
Handle	Plastic or S/S	
Lock	Optional	
Middle Shelf	Fixed or Adjustable	
Whole Body	Material	430S/S or 304S/S
	Thickness	1.0mm or 1.2mm
Packing	Fabricated, 1pc/ctn	

Storage Shelves

Cabinet

Open Front Dish Cabinet Specification (Inch)(mm)

Width	15", 18", 24", 30"	
Length	30", 36", 48", 60", 72", 84", 96"	
Height	35"	
Top Shelf Front	Round or Square	
Top Shelf Back	Flat top, 4" backsplash or 6" backsplash	
Middle Shelf	Adjustable	
Whole Body	Material	430S/S or 304S/S
	Thickness	18gauge or 16gauge
Bullet Feet	S/S Heavy duty, 1" adjustable	
Packing	Knock-down or Fabricated, 1pc/ctn	



Width	380mm, 457mm, 610mm, 762mm	
Length	762mm, 914mm, 1220mm, 1524mm, 1830mm, 2134mm, 2438mm	
Height	890mm	
Top Shelf Front	Round or Square	
Top Shelf Back	Flat top, 100mm or 152mm backsplash	
Middle Shelf	Adjustable	
Whole Body	Material	430S/S or 304S/S
	Thickness	1.2mm or 1.5mm
Bullet Feet	S/S Heavy duty, 25mm adjustable	
Packing	Knock-down or Fabricated, 1pc/ctn	

Enclosed Door Dish Cabinet Specification (Inch)(mm)

Width	24", 30"	
Length	30", 36", 48", 60", 72", 84", 96"	
Height	35"	
Top Shelf Back	Flat top, 4" backsplash or 6" backsplash	
Door Style	Sliding door	
Handle	S/S	
Lock	Optional	
Middle Shelf	Adjustable	
Whole Body	Material	430S/S or 304S/S
	Thickness	18gauge or 16gauge
Bullet Feet	S/S Heavy duty, 1" adjustable	
Packing	Knock-down or Fabricated or 1pc/ctn	



Width	610mm, 762mm	
Length	762mm, 914mm, 1220mm, 1524mm, 1830mm, 2134mm, 2438mm	
Height	890mm	
Top Shelf Back	Flat top, 100mm or 152mm backsplash	
Door Style	Sliding door	
Handle	S/S	
Lock	Optional	
Middle Shelf	Adjustable	
Whole Body	Material	430S/S or 304S/S
	Thickness	1.2mm or 1.5mm
Bullet Feet	S/S Heavy duty, 25mm adjustable	
Packing	Knock-down or Fabricated or 1pc/ctn	

Worktable Style Dish Cabinet Specification(Inch)(mm)

Width	30"	
Length	48", 60", 72", 84", 96"	
Top Shelf Back	Flat top, 4" backsplash or 6" backsplash	
Door Style	Sliding door	
Handle	S/S	
Lock	Optional	
Middle Shelf	No middle shelf	
Whole Body	Material	430S/S or 304S/S
	Thickness	18gauge or 16gauge
Legs and Feet	S/S legs, S/S feet 1" adjustable	
Packing	Knock-down, 1pc/ctn	



Width	762mm	
Length	1220mm, 1524mm, 1830mm, 2134mm, 2438mm	
Top Shelf Back	Flat top, 100mm or 152mm backsplash	
Door Style	Sliding door	
Handle	S/S	
Lock	Optional	
Middle Shelf	No middle shelf	
Whole Body	Material	430S/S or 304S/S
	Thickness	1.2mm or 1.5mm
Legs and Feet	S/S legs, S/S feet 25mm adjustable	
Packing	Knock-down, 1pc/ctn	

North American Compartment Sink Specification (Inch)(mm)

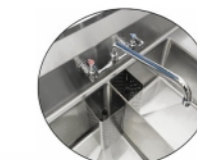
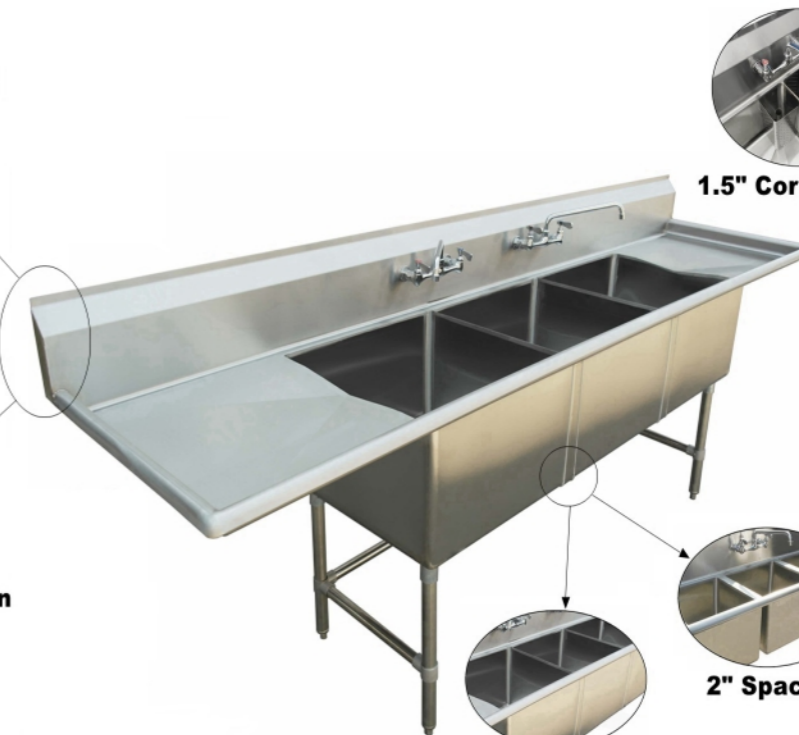
Tub Quantity	1 tub, 2 tubs, 3 tubs or 4 tubs	
Tub Size	Length X Width	10"X14", 12"X16", 14"X16", 15"X15", 16"X20", 18"X18", 18"X21", 18"X24", 20"X20", 24"X24"
	Depth	10" 11" 12" 14"
Drainboard Quantity	No / left / right / left&right	
Drainboard Size	10" 12" 15" 16" 18" 20" 24"	
Whole Body	Material	304S/S
	Thickness	18gauge or 16gauge
Sockets	Material	Stainless steel
Legs	Material	Stainless steel or galvanized
Bullet Feet	Material	Stainless steel or plastic, 1" adjustable
Drain Type	3.5" Center drain or 1.5" Corner drain	
Leg Bracing	No / "H" Shape / "U" Shape	
Backsplash Style	Edge up or edge down	
Style Between Tubs	2" Space or Sealed	
Packing	Wooden skid packing or 1pc/ctn	
Faucet	Optional	

Tub Quantity	1 tub, 2 tubs, 3 tubs or 4 tubs	
Tub Size	Length X Width	254X355mm, 305X406mm, 355X406mm, 380X380mm, 406X 508mm, 457X457mm, 457X533mm, 457X610mm, 508X508mm, 610X610mm
	Depth	254mm, 280mm, 305mm, 355mm
Drainboard Quantity	No / left / right / left&right	
Drainboard Size	254mm, 305mm, 380mm, 406mm, 457mm, 508mm, 610mm	
Whole Body	Material	304S/S
	Thickness	1.2mm or 1.5mm
Sockets	Material	Stainless steel
Legs	Material	Stainless steel or galvanized
Bullet Feet	Material	Stainless steel or plastic, 25mm adjustable
Drain Type	89mm Center drain or 38mm Corner drain	
Leg Bracing	No / "H" Shape / "U" Shape	
Backsplash Style	Edge up or edge down	
Style Between Tubs	50mm Space or Sealed	
Packing	Wooden skid packing or 1pc/ctn	
Faucet	Optional	

Edge up



Edge down



1.5" Corner drain



3.5" Center drain

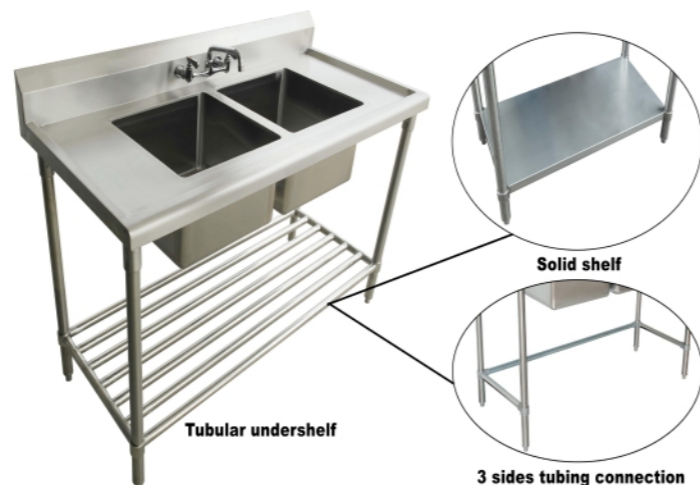


2" Space

Sealed

European Style Sink Specification(mm)

Tub Quantity	1 tub, 2 tubs or 3 tubs	
Tub Size (Length X Width)	300X300X250mm, 350X350X250mm, 350X400X250mm, 400X400X250mm, 450X450X250mm, 450X500X250mm, 500X450X250mm, 500X500X250mm, 600X400X250mm, 600X500X250mm, 600X600X250mm	
Overall Width	500mm, 600mm, 700mm, 750mm	
Overall Length	600mm, 700mm, 800mm, 900mm, 1000mm, 1100mm, 1200mm, 1300mm, 1400mm, 1500mm, 1600mm, 1700mm, 1800mm, 1900mm, 2000mm, 2100mm, 2200mm, 2300mm, 2400mm	
Height	890mm	
Drainboard Quantity	No / left / right / left&right	
Whole Body	Material	304S/S
	Thickness	1.2mm or 1.5mm
Sockets	Stainless steel	
Legs	Material: Stainless steel or galvanized	
Bullet feet	Material: Stainless steel or plastic, 25mm adjustable	
Undershelf	3 sides tubing connection / Tubing undershell / Solid shelf	
Packing	Wooden skid packing or 1pc/ctn	
Faucet	Optional	



Wall Mounted Hand Sink Specification (Inch)(mm)

Size 12" (WXLXH)	16"X12"X13"H with 9"X9"X5" tub	
Size 15" (WXLXH)	16"X16-3/4"X13"H with 12"X10"X6" tub	
Size 17" (WXLXH)	15"X17"X13"H with 14"X10"X5" tub	
Whole Body	Material	304S/S
	Thickness	22gauge, 20gauge or 18gauge
Drain Type	3.5" Certer drain	
Packing	1pc/ctn	
Side Splash	No / left / right / left&right	
Faucet	Optional	
Knee Valve	Optional	



Size 12" (WXLXH)	406X305X330mmH with 230X230X127mm tub	
Size 15" (WXLXH)	406X425X330mmH with 305X250X152mm tub	
Size 17" (WXLXH)	380X430X330mmH with 355X250X127mm tub	
Whole Body	Material	304S/S
	Thickness	0.8mm, 1.0mm or 1.2mm
Drain Type	3.5" Certer drain	
Packing	1pc/ctn	
Side Splash	No / left / right / left&right	
Faucet	Optional	
Knee Valve	Optional	

Utility sink Specification(Inch)(mm)

Tub Quantity	1 tub, 2 tubs or 3 tubs	
Tub Size	Length X Width	12"X21", 15"X15", 16"X21", 16"X24", 18"X18", 18"X21", 18"X24", 24"X21", 24"X24"
	Depth	13"
Whole Body	Material	304S/S
	Thickness	18gauge or 16gauge
Legs & Sockets	Material: Stainless steel or galvanized	
Bullet Feet	Material: Stainless steel or plastic, 1" adjustable	
Leg Bracing	No / "H" Shape / "U" Shape	
Packing	Wooden skid packing or 1pc/ctn	



Tub Quantity	1 tub, 2 tubs or 3 tubs	
Tub Size	Length X Width	305X533mm, 380X380mm, 406X533mm, 406X610mm, 457X457mm, 457X533mm, 457X610mm, 610X533mm, 610X610mm
	Depth	330mm
Whole Body	Material	304S/S
	Thickness	1.2 or 1.5mm
Legs & Sockets	Material: Stainless steel or galvanized	
Bullet Feet	Material: Stainless steel or plastic, 25mm adjustable	
Leg Bracing	No / "H" Shape / "U" Shape	
Packing	Wooden skid packing or 1pc/ctn	

Drop In Sink Specification (Inch)(mm)

Tub Size (LXWXH)	10"X14"X10" or customized	
Tub Quantity	1 tub, 2 tubs, 3 tubs	
Splash	No / 3 sides	
Whole Body	Material	304S/S
	Thickness	18gauge or 16gauge
Drain Type	3.5" Certer drain	
Top Shelf Edge Style	Edges up or down	
Side Splash	Optional	
Faucet	Optional	
Packing	1pc/ctn	



Tub Size (LXWXH)	250X355X250mm or customized	
Tub Quantity	1 tub, 2 tubs, 3 tubs	
Splash	No / 3 sides	
Whole Body	Material	304S/S
	Thickness	1.2mm or 1.5mm
Drain Type	3.5" Certer drain	
Top Shelf Edge Style	Edges up or down	
Side Splash	Optional	
Faucet	Optional	
Packing	1pc/ctn	

Detachable Drainboard Specification(Inch)(mm)

Size	Length X Width	18"X18", 18"X21", 24"X21", 24"X24"
Whole Body	Material	304S/S
	Thickness	18gauge or 16gauge
Connection	1"OD S/S tube	
Packing	1pc/ctn	



Size	Length X Width	457X457mm, 457X533mm, 610X533mm, 610X610mm
Whole Body	Material	304S/S
	Thickness	1.2 or 1.5mm
Connection	25mm OD S/S tube	
Packing	1pc/ctn	

Floor Stand Hand Sink Specification (Inch)(mm)

Overall Size (LXWXH)	17.7"X17"X33" + 2" rear uptrun	
Tub (LXWXH)	14"X10"X5"	
Hand Sink	Material	304S/S
	Thickness	20gauge or 18gauge
Legs	Material: S/S Square tube	
Leg Bracing	S/S Square tube	
Bullet Feet	Material: Stainless steel or plastic, 1" adjustable	
One Hole Faucet	Included	
Operated Valve	Knee valve or Foot valve optional	
Packing	1pc/ctn	



Overall Size (LXWXH)	450X430X838mm + 50mm rear uptrun	
Tub (LXWXH)	355X250X127mm	
Hand Sink	Material	304S/S
	Thickness	1.0mm or 1.2mm
Legs	Material: S/S Square tube	
Leg Bracing	S/S Square tube	
Bullet Feet	Material: Stainless steel or plastic, 25mm adjustable	
One Hole Faucet	Included	
Operated Valve	Knee valve or Foot valve optional	
Packing	1pc/ctn	

Foot Valve Pedestal Base Hand Sink Specification(Inch)(mm)

Overall Size (LXWXH)	21-1/4"X17-1/4" X34"H + 8" Backsplash	
Tub (LXWXH)	16"X14"X6"	
Whole Body	Material	304S/S
	Thickness	20gauge or 18gauge
Faucet	Included	
Foot Valve	Included	
Packing	1pc/ctn	



Overall Size (LXWXH)	540X430X864mmH + 200mm Backsplash	
Tub (LXWXH)	406X355X152mm	
Whole Body	Material	304S/S
	Thickness	1.0mm or 1.2mm
Faucet	Included	
Foot Valve	Included	
Packing	1pc/ctn	

Solid Dish Table Sink Specification (Inch)(mm)

Tub Quantity	1 tub, 2 tubs, 3 tubs	
Tub Size	Length X Width	18"X18", 24"X24"
	Depth	12" or 14"
Direction	Left / Right	
Whole Body	Material	304S/S
	Thickness	18gauge or 16gauge
Legs & Sockets	Material	Stainless steel or galvanized
Bullet Feet	Material	Stainless steel or plastic, 1" adjustable
Leg Bracing	No / "H" Shape / "U" Shape	
Packing	Wooden skid packing	



Tub Quantity	1 tub, 2 tubs, 3 tubs	
Tub Size	Length X Width	457X457mm, 610X610mm
	Depth	305mm or 355mm
Direction	Left / Right	
Whole Body	Material	304S/S
	Thickness	1.2mm or 1.5mm
Legs & Sockets	Material	Stainless steel or galvanized
Bullet Feet	Material	Stainless steel or plastic, 25mm adjustable
Leg Bracing	No / "H" Shape / "U" Shape	
Packing	Wooden skid packing	

Clean Dish Table Specification(Inch)(mm)

Width	30"	
Length	24", 30", 36", 42", 48", 60", 72", 84", 96"	
Height	44"	
Direction	Left / Right	
Whole Body	Material	304S/S
	Thickness	18gauge or 16gauge
Legs & Sockets	Material	Stainless steel or galvanized
Bullet Feet	Material	Stainless steel or plastic, 1" adjustable
Leg Bracing	No / "H" Shape	
Packing	Knock down, 1pc/ctn	



Width	762mm	
Length	610mm, 762mm, 914mm, 1067mm, 1220mm, 1524mm, 1830mm, 2134mm, 2438mm	
Height	1118mm	
Direction	Left / Right	
Whole Body	Material	304S/S
	Thickness	1.2mm or 1.5mm
Legs & Sockets	Material	Stainless steel or galvanized
Bullet Feet	Material	Stainless steel or plastic, 25mm adjustable
Leg Bracing	No / "H" Shape	
Packing	Knock down, 1pc/ctn	

Drain Basket Specification (Inch)(mm)

Size	19.50"X19.50"X4"	
Whole Body	Material	304S/S
	Thickness	18gauge or 16gauge
Packing	1pc/ctn	



Size	495X495X100mm	
Whole Body	Material	304S/S
	Thickness	1.2mm or 1.5mm
Packing	1pc/ctn	

Solid Dish Table Specification(Inch)(mm)

Width	30"	
Length	24", 30", 36", 42", 48", 60", 72", 84", 96"	
Height	44"	
Tub Size	20"X20"X5"	
Direction	Left / Right	
Whole Body	Material	304S/S
	Thickness	18gauge or 16gauge
Legs & Sockets	Material	Stainless steel or galvanized
Bullet Feet	Material	Stainless steel or plastic, 1" adjustable
Leg Bracing	No / "H" Shape	
Packing	Knock down, 1pc/ctn	



Width	762mm	
Length	610mm, 762mm, 914mm, 1067mm, 1220mm, 1524mm, 1830mm, 2134mm, 2438mm	
Height	1118mm	
Tub Size	508X508X127mm	
Direction	Left / Right	
Whole Body	Material	304S/S
	Thickness	1.2mm or 1.5mm
Legs & Sockets	Material	Stainless steel or galvanized
Bullet Feet	Material	Stainless steel or plastic, 25mm adjustable
Leg Bracing	No / "H" Shape	
Packing	Knock down, 1pc/ctn	

Mop Sink Specification (Inch)(mm)

Size (WXLXH)	19"X22"X12"	Tub Size: 16"X19"X8"
	24"X24"X13"	Tub Size: 21"X21"X9"
	21"X25"X10"	Tub Size: 16"X20"X6"
	21"X25"X16"	Tub Size: 16"X20"X12"
	25"X33"X10"	Tub Size: 20"X28"X6"
	25"X33"X16"	Tub Size: 20"X28"X12"
Whole Body	Material	304S/S
	Thickness	18gauge or 16gauge
Back Edge Style	Flat top or 1" rear edge up	
Drain Type	3.5" Flat drain with 2" IPS	
Packing	1pc/ctn	



Size (WXLXH)	482X558 X305mm	Tub Size: 406X558 X203mm
	610X610 X330mm	Tub Size: 533X533 X228mm
	533X635 X250mm	Tub Size: 406X508 X152mm
	533X635 X406mm	Tub Size: 406X508 X305mm
	635X838 X250mm	Tub Size: 508X711 X152mm
	635X838 X406mm	Tub Size: 508X711 X305mm
Whole Body	Material	304S/S
	Thickness	1.2mm or 1.5mm
Back Edge Style	Flat top or 25mm rear edge up	
Drain Type	89mm Flat drain with 50mm IPS	
Packing	1pc/ctn	

Dish Table

Mop Sink

Underbar Sink Specification(Inch)(mm)

Overall Width	18-3/4"	
1 Tub Overall Length	14", 24", 36"	
2 Tubs Overall Length	26", 36", 48"	
3 Tubs Overall Length	38", 48", 60", 72"	
Overall Height	30" + 3" backsplash	
Tub Size	10"X14"X10"	
Drainboard	No / left / right / left&right	
Whole Body	Material	304S/S
	Thickness	20gauge 18gauge or 16gauge
Legs & Sockets	Material	Stainless steel or galvanized
Bullet Feet	Material	Stainless steel or plastic, 1" adjustable
Leg Bracing	No / "H" Shape / "U" Shape	
Packing	1pc/ctn	
Faucet	Optional	



Overall Width	476mm	
1 Tub Overall Length	355mm, 610mm, 914mm	
2 Tubs Overall Length	660mm, 914mm, 1220mm	
3 Tubs Overall Length	965mm, 1220mm, 1524mm, 1830mm	
Overall Height	762 + 76mm backsplash	
Tub Size	250X355X250mm	
Drainboard	No / left / right / left&right	
Whole Body	Material	304S/S
	Thickness	1.0mm, 1.2mm or 1.5mm
Legs & Sockets	Material	Stainless steel or galvanized
Bullet Feet	Material	Stainless steel or plastic, 25mm adjustable
Leg Bracing	No / "H" Shape / "U" Shape	
Packing	1pc/ctn	
Faucet	Optional	

Speed Rail Hanger Specification (Inch)(mm)

Width	4"	
Length	2"	
Depth	9"	
Whole Body	Material	430S/S or 304S/S
	Thickness	18gauge or 16gauge
Packing	2pcs/ctn	



Width	100mm	
Length	50mm	
Depth	230mm	
Whole Body	Material	430S/S or 304S/S
	Thickness	1.2mm or 1.5mm
Packing	2pcs/ctn	

Single Speed Rail Specification(Inch)(mm)

Width	4"	
Length	15", 22", 24", 30", 32", 36", 42", 48"	
Depth	6-1/2"	
Whole Body	Material	430S/S or 304S/S
	Thickness	20gauge 18gauge or 16gauge
Packing	1pc/ctn	
Speed Rail Hanger	Optional	



Width	100mm	
Length	318mm, 560mm, 610mm, 762mm, 813mm, 914mm, 1067mm, 1219mm	
Depth	165mm	
Whole Body	Material	430S/S or 304S/S
	Thickness	1.0mm, 1.2mm or 1.5mm
Packing	1pc/ctn	
Speed Rail Hanger	Optional	

Underbar Hand Sink Specification (Inch)(mm)

Width	18" or 21"	
Length	12" or 15"	
Overall height	30" + 3" or 6" backsplash	
Tub	9"X9"X4"	
Whole body	Material	304S/S
	Thickness	20gauge 18gauge or 16gauge
Legs & Sockets	Material	Stainless steel or galvanized
Bullet Feet	Material	Stainless steel or plastic, 1" adjustable
Leg Bracing	No / "H" Shape	
Side Splash	Optional	
Soap Dispenser	Optional	
Towel Dispenser	Optional	
Faucet	Optional	
Packing	1pc/ctn	



Width	457mm or 533mm	
Length	305mm or 380mm	
Overall height	762mm + 76mm or 152mm backsplash	
Tub	228X228X100mm	
Whole body	Material	304S/S
	Thickness	1.0mm, 1.2mm or 1.5mm
Legs & Sockets	Material	Stainless steel or galvanized
Bullet Feet	Material	Stainless steel or plastic, 25mm adjustable
Leg Bracing	No / "H" Shape	
Side Splash	Optional	
Soap Dispenser	Optional	
Towel Dispenser	Optional	
Faucet	Optional	
Packing	1pc/ctn	

Double Speed Rail Specification(Inch)(mm)

Style	Abreast or Telescoped	
Width	8"	
Length	15", 22", 24", 30", 32", 36", 42", 48"	
Depth	6-1/2" or 10-1/2"H	
Whole Body	Material	430S/S or 304S/S
	Thickness	20gauge 18gauge or 16gauge
Packing	1pc/ctn	
Speed Rail Hanger	Optional	



Style	Abreast or Telescoped	
Width	203mm	
Length	318mm, 560mm, 610mm, 762mm, 813mm, 914mm, 1067mm, 1219mm	
Depth	165mm or 267mm	
Whole Body	Material	430S/S or 304S/S
	Thickness	1.0mm, 1.2mm or 1.5mm
Packing	1pc/ctn	
Speed Rail Hanger	Optional	

Underbar Hand Sink Cabinet Specification (Inch)(mm)

Width	20" or 25"	
Length	12" or 18"	
Overall height	30" + 3" or 6" backsplash	
Tub	10"X14"X10"	
Whole body	Material	304S/S
	Thickness	20gauge 18gauge or 16gauge
Legs	Material	Stainless steel or galvanized
Bullet Feet	Material	Stainless steel or plastic, 1" adjustable
Side Splash	Optional	
Faucet	Optional	
Packing	1pc/ctn	



Width	508mm or 635mm	
Length	305mm or 457mm	
Overall height	762mm + 76mm or 152mm backsplash	
Tub	250X355X254mm	
Whole body	Material	304S/S
	Thickness	1.0mm, 1.2mm or 1.5mm
Legs	Material	Stainless steel or galvanized
Bullet Feet	Material	Stainless steel or plastic, 25mm adjustable
Side Splash	Optional	
Faucet	Optional	
Packing	1pc/ctn	

Underbar Blender Station Specification(Inch)(mm)

Width	23" or 26"	
Length	12" or 18"	
Overall height	30" + 3" or 6" backsplash	
Tub	9"X9"X4"	
Whole body	Material	304S/S
	Thickness	20gauge 18gauge or 16gauge
Legs & Sockets	Material	Stainless steel or galvanized
Bullet Feet	Material	Stainless steel or plastic, 1" adjustable
Leg Bracing	No / "H" Shape	
Faucet	Optional	
Packing	1pc/ctn	



Width	584mm or 660mm	
Length	305mm or 457mm	
Overall height	762mm + 76mm or 152mm backsplash	
Tub	230X230X100mm	
Whole body	Material	304S/S
	Thickness	1.0mm, 1.2mm or 1.5mm
Legs & Sockets	Material	Stainless steel or galvanized
Bullet Feet	Material	Stainless steel or plastic, 25mm adjustable
Leg Bracing	No / "H" Shape	
Faucet	Optional	
Packing	1pc/ctn	

Recessed Bar Drainboard Specification (Inch)(mm)

Top Style	Corrugated Top / Removable perforated drainboard	
Width	18" 21" 25" 30"	
Length	12" 18" 24" 30"	
Overall height	30" + 3" / 26" + 7" backsplash	
Drain Type	1" IPS drain	
Whole body	Material	304S/S
	Thickness	20gauge 18gauge or 16gauge
Legs & Sockets	Material	Stainless steel or galvanized
Bullet Feet	Material	Stainless steel or plastic, 1" adjustable
Leg Bracing	No / "H" Shape	
Packing	1pc/ctn	



Top Style	Corrugated Top / Removable perforated drainboard	
Width	457mm, 533mm, 635mm, 762mm	
Length	305mm, 457mm, 610mm, 762mm	
Overall height	762mm + 76mm / 660mm + 178mm backsplash	
Drain Type	25mm IPS drain	
Whole body	Material	304S/S
	Thickness	1.0mm, 1.2mm or 1.5mm
Legs & Sockets	Material	Stainless steel or galvanized
Bullet Feet	Material	Stainless steel or plastic, 25mm adjustable
Leg Bracing	No / "H" Shape	
Packing	1pc/ctn	

Liqor Display Specification(Inch)(mm)

Width	23"/ 26"	
Length	12", 18", 24", 36"	
Overall height	30" + 3" or 6" backsplash	
Whole body	Material	304S/S
	Thickness	20gauge 18gauge or 16gauge
Bar	16gauge 304S/S	
Legs & Sockets	Material	Stainless steel or galvanized
Bullet Feet	Material	Stainless steel or plastic, 1" adjustable
Leg Bracing	No / "H" Shape	
Packing	1pc/ctn	



Width	584mm / 660mm	
Length	305mm, 457mm, 610mm, 914mm	
Overall height	762mm + 76mm or 152mm backsplash	
Whole body	Material	304S/S
	Thickness	1.0mm, 1.2mm or 1.5mm
Bar	1.5mm 304S/S	
Legs & Sockets	Material	Stainless steel or galvanized
Bullet Feet	Material	Stainless steel or plastic, 25mm adjustable
Leg Bracing	No / "H" Shape	
Packing	1pc/ctn	

Beer Drainer Specification (Inch)(mm)

Top Style	Corrugated Top / Removable perforated drainboard	
Width	18" 21"	
Length	18" 24"	
Overall height	26" + 7" backsplash	
Drain Type	1" IPS drain	
Whole body	Material	304S/S
	Thickness	20gauge 18gauge or 16gauge
Legs & Sockets	Material	Stainless steel or galvanized
Bullet Feet	Material	Stainless steel or plastic, 1" adjustable
Leg Bracing	No / "H" Shape	
Packing	1pc/ctn	



Top Style	Corrugated Top / Removable perforated drainboard	
Width	457mm, 533mm	
Length	457mm, 610mm	
Overall height	660mm + 178mm backsplash	
Drain Type	25mm IPS drain	
Whole body	Material	304S/S
	Thickness	1.0mm, 1.2mm or 1.5mm
Legs & Sockets	Material	Stainless steel or galvanized
Bullet Feet	Material	Stainless steel or plastic, 25mm adjustable
Leg Bracing	No / "H" Shape	
Packing	1pc/ctn	

Underbar Drainboard Specification(Inch)(mm)

Top Style	Corrugated Top / Removable perforated drainboard	
Width	18" 21"	
Length	12" 18" 24" 30" 36" 42" 48"	
Overall height	30" + 3" backsplash	
Drain Type	1" IPS drain	
Whole body	Material	304S/S
	Thickness	20gauge 18gauge or 16gauge
Legs & Sockets	Material	Stainless steel or galvanized
Bullet feet	Material	Stainless steel or plastic, 1" adjustable
Leg Bracing	No / "H" Shape	
Packing	1pc/ctn	



Top Style	Corrugated Top / Removable perforated drainboard	
Width	457mm, 533mm	
Length	305mm, 457mm, 610mm, 762mm, 914mm, 1067mm, 1220mm	
Overall height	762mm + 76mm backsplash	
Drain Type	25mm IPS drain	
Whole body	Material	304S/S
	Thickness	1.0mm, 1.2mm or 1.5mm
Legs & Sockets	Material	Stainless steel or galvanized
Bullet feet	Material	Stainless steel or plastic, 25mm adjustable
Leg Bracing	No / "H" Shape	
Packing	1pc/ctn	

Drainboard Cabinet Specification (Inch)(mm)

Top Style	Corrugated Top / Removable perforated drainboard / Flat top	
Width	21" 25" 30"	
Length	12" 18" 24" 30" 36" 48"	
Overall height	30" + 3" backsplash	
Drain Type	1" IPS drain	
Whole body	Material	304S/S
	Thickness	20gauge 18gauge or 16gauge
Legs & Sockets	Material	Stainless steel or galvanized
Bullet Feet	Material	Stainless steel or plastic, 1" adjustable
Mid Shelf	Optional	
Hinged Door	Optional	
Lock	Optional	
Packing	1pc/ctn	



Top Style	Corrugated Top / Removable perforated drainboard / Flat top	
Width	533mm, 635mm, 762mm	
Length	305mm, 457mm, 610mm, 762mm, 914mm, 1220mm	
Overall height	762mm + 76mm backsplash	
Drain Type	25mm IPS drain	
Whole body	Material	304S/S
	Thickness	1.0mm, 1.2mm or 1.5mm
Legs & Sockets	Material	Stainless steel or galvanized
Bullet Feet	Material	Stainless steel or plastic, 25mm adjustable
Mid Shelf	Optional	
Hinged Door	Optional	
Lock	Optional	
Packing	1pc/ctn	

Underbar

Underbar

Glass Rack Cabinet Specification (Inch)(mm)

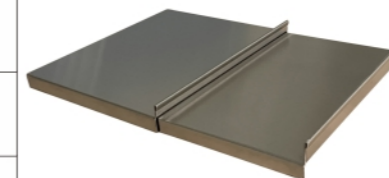
Top Style	Corrugated Top / Removable perforated drainboard / Flat top	
Width X Length	23" X 24"	
Overall height	30" + 3" or 6" backsplash	
Drain Type	Corrugated top / Removable perforated drainboard	1" IPS drain at top shelf and bottom shelf
	Flat top	1" IPS drain at bottom shelf only
Whole body	Material	304S/S
	Thickness	20gauge 18gauge or 16gauge
Legs & Sockets	Material	Stainless steel or galvanized
Bullet Feet	Material	Heavy Duty, Stainless steel or plastic, 1" adjustable
Hinged Door	Optional	
Lock	Optional	
Packing	1pc/ctn	



Top Style	Corrugated Top / Removable perforated drainboard / Flat top	
Width X Length	584mm X 610mm	
Overall height	762mm + 76mm or 152mm backsplash	
Drain Type	Corrugated top / Removable perforated drainboard	25mm IPS drain at top shelf and bottom shelf
	Flat top	25mm IPS drain at bottom shelf only
Whole body	Material	304S/S
	Thickness	1.0mm, 1.2mm or 1.5mm
Legs & Sockets	Material	Stainless steel or galvanized
Bullet Feet	Material	Heavy Duty, Stainless steel or plastic, 25mm adjustable
Hinged Door	Optional	
Lock	Optional	
Packing	1pc/ctn	

Sliding Cover Specification (Inch)(mm)

Width	18" 21"	
Length	12" 24" 30" 36"	
Whole body	Material	304S/S
	Thickness	20gauge 18gauge or 16gauge
Packing	1 pair/ctn	



Width	457mm, 533mm	
Length	305mm, 610mm, 762mm, 914mm	
Whole body	Material	304S/S
	Thickness	1.0mm, 1.2mm or 1.5mm
Packing	1 pair/ctn	

Drop In Ice Bin Specification(Inch)(mm)

Width	18"	
Length	12" 24" 30" 36"	
Depth	13"	
Whole body	Material	304S/S
	Thickness	20gauge 18gauge or 16gauge
Insulation	Insulation cotton filling	
Sliding Cover	Included	
Packing	1 pc/ctn	



Width	457mm	
Length	305mm, 610mm, 762mm, 914mm	
Depth	330mm	
Whole body	Material	304S/S
	Thickness	1.0mm, 1.2mm or 1.5mm
Insulation	Insulation cotton filling	
Sliding Cover	Included	
Packing	1 pc/ctn	

72 Series Tool Chest Specification (Inch)(mm)

Net Size	18.1"X72"X28.3"H	
Top Shelf	Material	304S/S 430S/S or Rubber wood
	Thickness	22gauge or 20gauge
Panel & Back Board	Material	304S/S or 430S/S
	Thickness	22gauge or 20gauge
Bottom Board	Material	201S/S or Galvanized
	Thickness	16gauge
Drawer	Quantities	10 or 15
	Material	304S/S or 430S/S
	Thickness	22gauge
Drawer Linner	Material	304S/S, 430S/S or Metal black coating
	Thickness	22gauge
Packing	Individual carton box packing	

Net Size	460X1829X719mm	
Top Shelf	Material	304S/S 430S/S or Rubber wood
	Thickness	0.8mm or 1.0mm
Panel & Back Board	Material	304S/S or 430S/S
	Thickness	0.8mm or 1.0mm
Bottom Board	Material	201S/S or Galvanized
	Thickness	1.5mm
Drawer	Quantities	10 or 15
	Material	304S/S or 430S/S
	Thickness	0.8mm
Drawer Linner	Material	304S/S, 430S/S or Metal black coating
	Thickness	0.8mm
Packing	Individual carton box packing	

Freestanding Ice Bin Specification(Inch)(mm)

Width	18" 21"	
Length	24" 30" 36"	
Height	30" + 3" backsplash	
Whole body	Material	304S/S
	Thickness	20gauge 18gauge or 16gauge
Insulation	Insulation cotton filling	
Legs & Sockets	Material	Stainless steel or galvanized
Bullet feet	Material	Stainless steel or plastic, 1" adjustable
Plastic bottle holder	2 pcs Included	
Sliding Cover	Included	
Leg Bracing	"H" Shape	
Packing	1 pc/ctn	



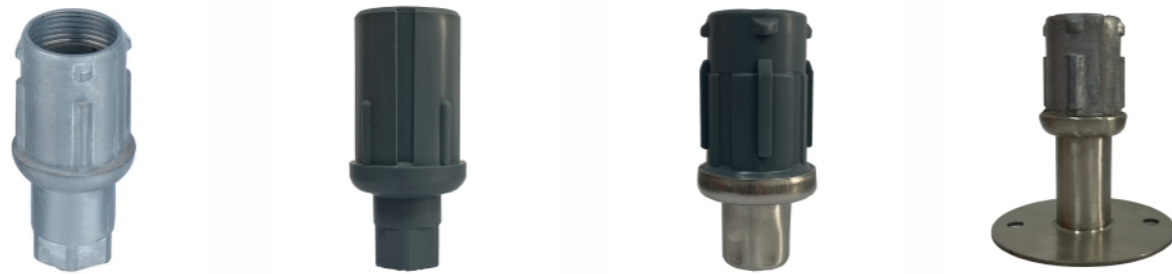
Width	457mm, 533mm	
Length	610mm, 762mm, 914mm	
Height	762mm + 76mm backsplash	
Whole body	Material	304S/S
	Thickness	1.0mm, 1.2mm or 1.5mm
Insulation	Insulation cotton filling	
Legs & Sockets	Material	Stainless steel or galvanized
Bullet feet	Material	Stainless steel or plastic, 25mm adjustable
Plastic bottle holder	2 pcs Included	
Sliding Cover	Included	
Leg Bracing	"H" Shape	
Packing	1 pc/ctn	



Aluminum joint socket



Bullet foot



Casters



Drain



Valve



Faucets

